

# Heimisher Bulgar

Sam Musiker

D Cm

5 Cm

9 2. D Cm/Eb D

14 Gm Cm

18 2. Cm D Cm

23 Cm

27 Gm

30 1. Gm D 2. Gm D

Detailed description of the musical score: The piece is in 4/4 time and uses a key signature of two sharps (F# and C#). The score is written on a single treble clef staff. It begins with a key signature change from C major to F# major. The first staff (measures 1-4) features a D major chord and a Cm chord. The second staff (measures 5-8) includes Cm, trills (tr), and a first ending bracket leading to a D major chord. The third staff (measures 9-13) contains a second ending bracket, triplets (3), and chords D, Cm/Eb, and D. The fourth staff (measures 14-17) features Gm, Cm, and a first ending bracket leading to a D major chord. The fifth staff (measures 18-22) includes a second ending bracket, Cm, D, and Cm chords. The sixth staff (measures 23-26) contains Cm, trills, and a D chord. The seventh staff (measures 27-29) is marked Gm and consists of eighth notes. The eighth staff (measures 30-34) has two endings: the first ending is marked Gm and D, and the second ending is marked Gm and D, ending with a key signature change to three sharps (F#, C#, G#).

# Der Fetter Max's Bulgar

Sam Musiker

32 E B E A E

37 Am Dm E B<sup>7</sup> E

41 E G D<sup>7</sup> G Cm

45 Cm F Dm

49 E E E tr<sup>~</sup> Am tr E

53 Am E tr<sup>~</sup> tr<sup>~</sup>

56 Am Dm E B<sup>7</sup> E

# Sam Shpielt

*Sam Musiker*

59 Dm Dm C7

63 F. Dm/A A7

66 1. Dm 2. Dm F

70 F Dm A7

74 1. Dm 2. Dm Dm

77 Dm C7 F.

80 F Dm/A A7 Dm

83 F G

85 G

88 Fm F°

92 1. G 2. G

95 C

98 C F

102 F Fm

105 G F

107 Dm/A A7 Dm

# Rumanian Serba

Marty Levitt

109

Dm

D<sup>o</sup> tr

113

Dm

A/E

Dm/F

D<sup>7</sup>/F<sup>#</sup>

116

Gm

D<sup>7</sup>

Gm

A<sup>7</sup>

Dm

1.

Dm

B<sup>o</sup>

C<sup>7</sup>

F

3

2.

Dm

tr

tr

1.

G<sup>#o</sup>

C

2. Dm

A<sup>7</sup> 3

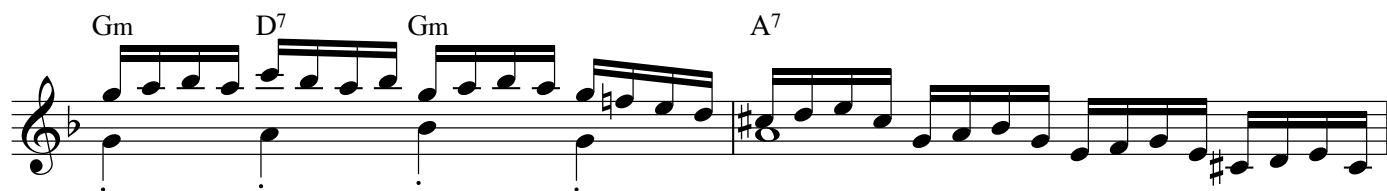
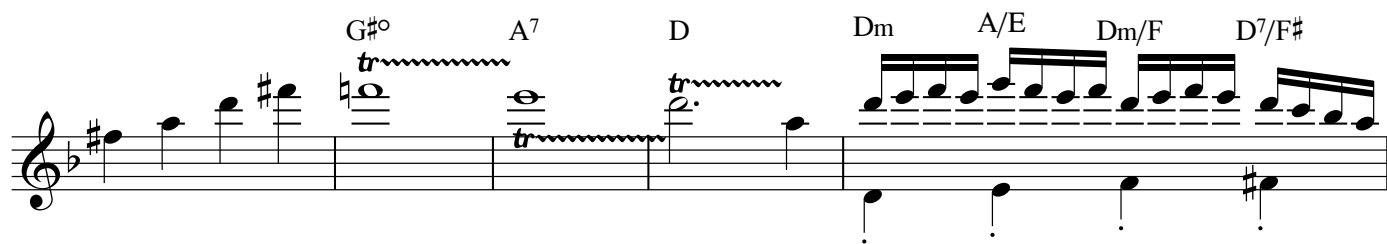
3

3

3

3

Dm



# Bulgar

Marty Levitt

Em

Em

Em Em A#° tr

B7 Em A#° tr B7

B Am B Am B Am

B Am B Em

Em

Em

Em

1. B<sup>7</sup>

2. B<sup>7</sup> Em B Am B Am B

B Am B Am B

Detailed description: The image shows a musical score for guitar on page 8. It consists of four staves of music in the key of G major (one sharp). The first staff begins with an Em chord and contains a melodic line of eighth notes. The second staff continues the melody, featuring a first ending bracketed section with a B<sup>7</sup> chord. The third staff starts with a second ending bracketed section, marked with a '2.' and contains a sequence of chords: B<sup>7</sup>, Em, B, Am, B, Am, B. The fourth staff continues the melodic line with chords B, Am, B, Am, B. The piece concludes with a double bar line.



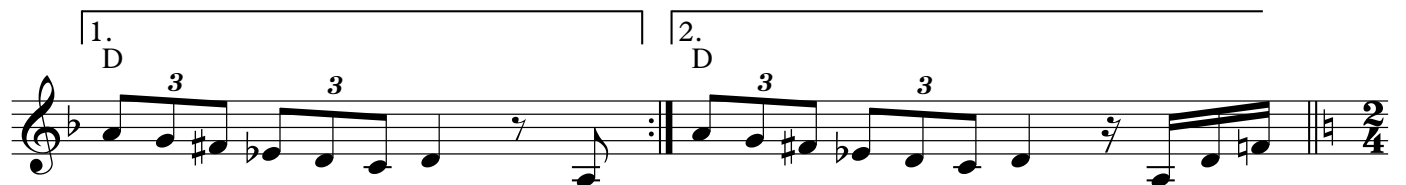
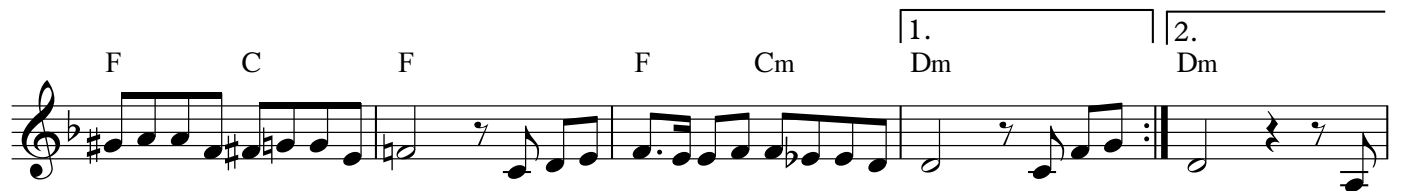
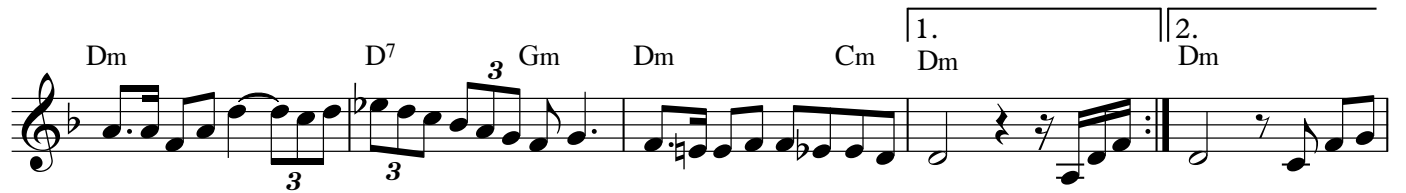
# Epstein Theme

*Epstein Brothers*

The musical score for the Epstein Theme is presented in three staves. The key signature is one sharp (F#), and the time signature is 4/4. The first staff begins with a treble clef and a G major chord. It contains a first ending (marked '1.') and a second ending (marked '2. Fm G'). The second staff continues the melody with chords G7, Cm, Fm, and G. The third staff concludes the piece with chords G7, Cm, Fm, and G, ending with a double bar line and a key signature change to one flat (F).

# Bulgar

*Epstein Brothers*



# Mendel's Song

Mickey Katz

Am E7 Am E7 Am E7 Am E7

Am E7 Am

Am E7 Am G7

C C/B Am E7/B Am E/G#

Am Am/G F E7

Am E7 Am

Am E7 Am E7 Am

# Mamaliege Dance

Mickey Katz

D

3X D To Coda

G

C Gm D Dm

Dm 3X

D C

Gm D

Dm

D.C.

3/4

# Poppa & Shtekelekh

*Epstein Brothers*

G C D<sup>7</sup> G Dm/F E E/B E G C D<sup>7</sup> G Dm/F E

D<sup>7</sup> G Dm/F E E/B E D<sup>7</sup> G Dm/F E